



Blondin Way, London, SE16 6BF

Immaculately presented and spacious top floor apartment, located in the heart of Rotherhithe, next to the greenery of Russia Dock Woodland and a short stroll from Canada Water underground station as well as the River Thames. The property boasts a naturally bright open plan living area with double height ceiling leading into the generous private balcony, a modern kitchen with all mod cons, a stylish bathroom, and a generous bedroom complimented by a built-in wardrobe. Onsite benefits include concierge and a gym. Available on a furnished or unfurnished basis.

Council Tax Band: D

£2,000 Per month

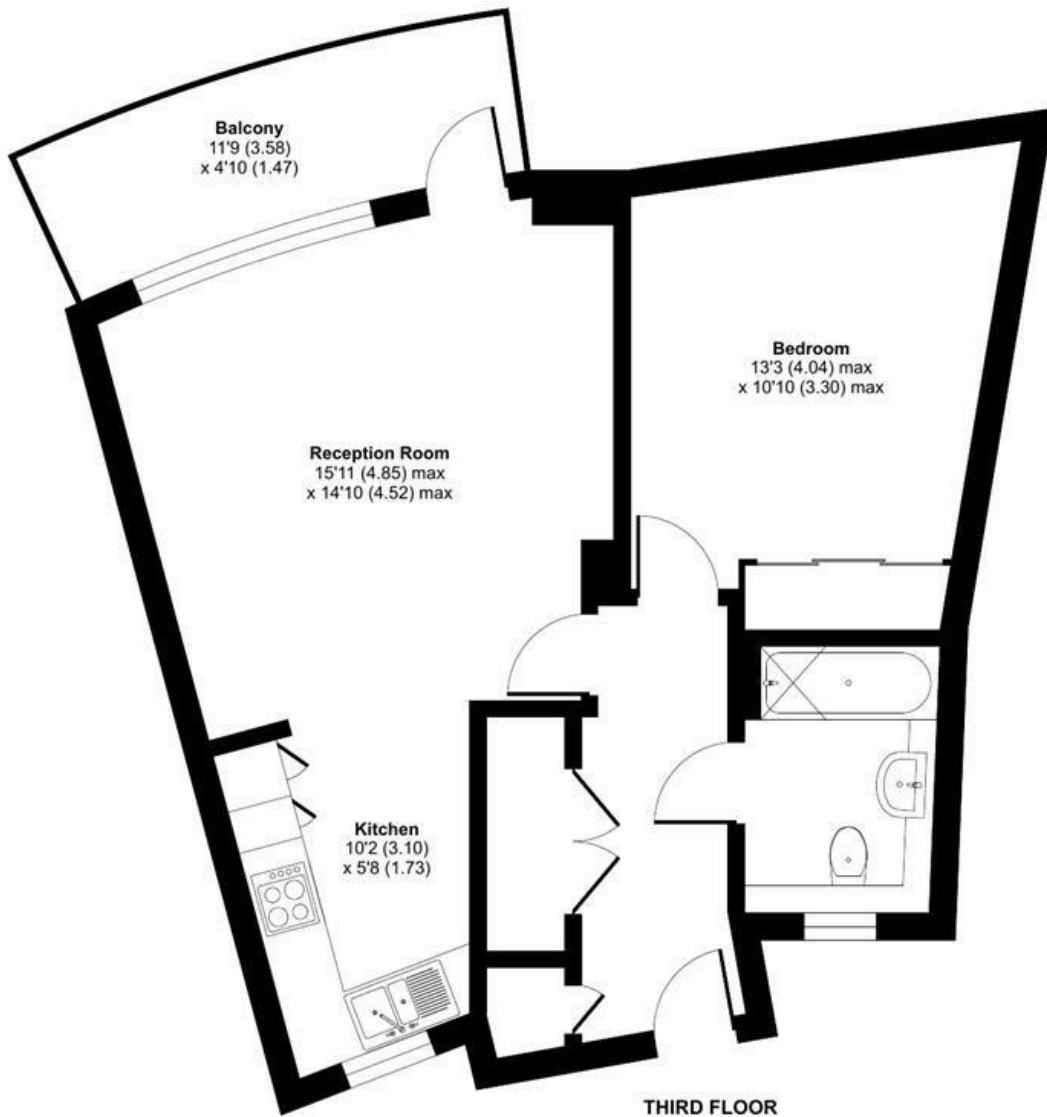
- Modern Apartment
- Next to the Russia Woodland
- Double Height Ceilings
- Concierge and Gym
- Close to Transport Links

Alex & Matteo
ESTATE AGENTS

Blondin Way, London, SE16

Approximate Area = 580 sq ft / 54 sq m

For identification only - Not to scale



Alex & Matteo
ESTATE AGENTS



**Certified
Property
Measurer**

Floor plan produced in accordance with RICS Property Measurement Standards incorporating International Property Measurement Standards (IPMS2 Residential). © nitchcom 2023. Produced for Alex & Matteo Estate Agents. REF: 936458

Energy Efficiency Rating		
	Current	Potential
Very energy efficient - lower running costs		
(92 plus) A		
(81-91) B	81	81
(69-80) C		
(55-68) D		
(39-54) E		
(21-38) F		
(1-20) G		
Not energy efficient - higher running costs		
England & Wales		
	EU Directive 2002/91/EC	